

# Highland

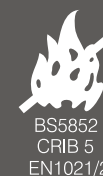
TECHNICAL INFORMATION

Composition:	100% Polyester
Weight:	Face: 350 gsm +/- 5%
Width:	140cm (55")
Flammability:	BS5852 Part 2 Ignition Source 5 CAL TB 116 and 117, NFPA 260 (USA) EN1021-1/2 Marine Standard IMO A.652 (16)
Abrasion Resistance:	45,000 Martindale rubs 60,000 Wyzenbeek DR
Waterproof:	Hydrostatic head >1 metre
Colour Fastness to Rubbing:	BS EN ISO 105: X12: 2002 Dry > 4-5 Wet > 4-5
Additional:	Anti-microbial and Anti-fungal with a stain resistant finish
Recommended Cleaning:	Clean and care for the fabric on a regular basis and it will maintain its condition and appearance. Most stains can be removed by wiping clean. Microfibre cloths are extremely effective without soap, which is helpful as soap can clog your fabric. <ul style="list-style-type: none"> <li>• Vacuum and wipe clean regularly with a damp cloth (microfibre recommended) and water to remove dust particles and prevent build up of soiling.</li> <li>• Take care not to cause abrasive damage.</li> <li>• Remove spillages promptly with an absorbent dry cloth.</li> <li>• For heavier soiling, use a mild proprietary cleaner and warm water <b>ensuring that cleaning product residues are removed</b> as this inhibits the stain repellent</li> <li>• For infection control purposes, staining should be removed promptly (within 15 minutes) with <b>COLD</b> water and then cleaned as above. A 5% bleach solution, Haz Tabs or Chlor Clean may be used.</li> <li>• Water and oil based stains may be removed by using most water based house proprietary spray cleaning agents, following the instructions carefully and removing all soap residues.</li> <li>• Do not apply other chemicals/stain removers.</li> <li>• Do not machine wash, fully immerse or dry clean.</li> </ul>
Continuity:	Although every effort is made to ensure that fabrics ordered match the colours in this pattern card, slight variations may occur from batch to batch.

Please note Panaz reserve the right to update product specification at their discretion.



For further information please visit  
[www.panaz.com](http://www.panaz.com)



Collection  
**Highland**  
TO IGNITION SOURCE 5

Head Office,  
Panaz Ltd, Spring Mill, Fence,  
Near Burnley,  
Lancashire, BB12 9HP  
England  
Tel: +44 (0) 1282 696969  
Fax: +44 (0) 1282 611519  
email: [admin@panaz.co.uk](mailto:admin@panaz.co.uk)

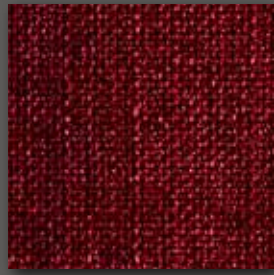
Panaz France  
7 rue Ferdinand Fabre,  
75015 Paris  
(Métro Convention - Ligne 12)  
France  
Tel: +33 (0) 1 40 25 05 07  
Fax: +33 (0) 1 40 25 09 64  
email: [patrick.martinez@noos.fr](mailto:patrick.martinez@noos.fr)

Panaz Germany  
Nortzstrasse 20  
67152 Ruppertsberg  
Germany  
Tel: +49 6326 967 528  
Fax: +49 6326 980 553  
email: [Uwe.Ney@t-online.de](mailto:Uwe.Ney@t-online.de)

Panaz (USA) Inc  
2102 Business Center Drive  
Suite 215B  
Irvine, CA 92612  
USA  
Tel: +1 949 253 4163  
Fax: +1 949 253 4167  
email: [sales@panaz.com](mailto:sales@panaz.com)



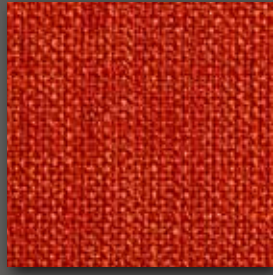
Highland  
817 Chestnut



Highland  
400 Red



Highland  
408 Terracotta



Highland  
402 Orange



Highland  
644 Cerise



Highland  
624 Mulberry



Highland  
405 Crimson



Highland  
609 Rose



Highland  
412 Purple



Highland  
642 Thistle



Highland  
807 Mushroom



Highland  
905 Dove



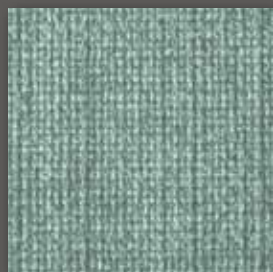
Highland  
226 Lime



Highland  
116 Navy



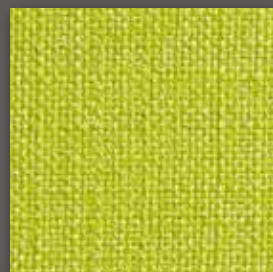
Highland  
129 Ocean



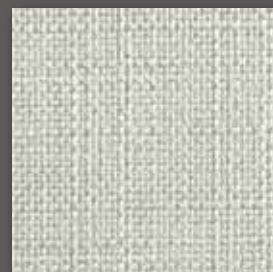
Highland  
134 Sky



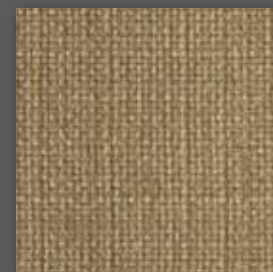
Highland  
703 Mink



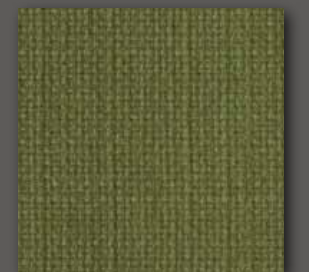
Highland  
313 Yellow



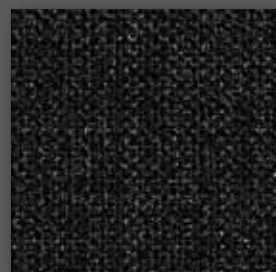
Highland  
805 Cream



Highland  
823 Chablis



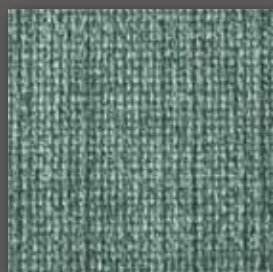
Highland  
208 Fern Green



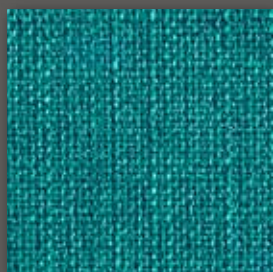
Highland  
903 Charcoal



Highland  
911 Steel



Highland  
131 Azure



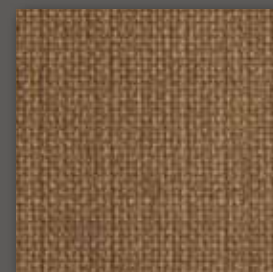
Highland  
201 Jade



Highland  
836 Sand



Highland  
321 Wheat



Highland  
841 Biscotti



Highland  
231 Olive