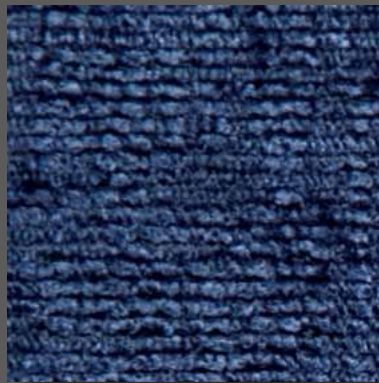




Darcy  
615 Berry



Darcy  
105 Indigo



Darcy  
129 Ocean



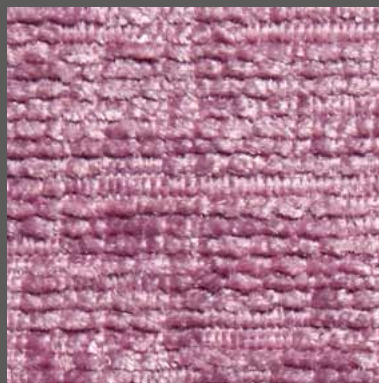
Darcy  
791 Mocha



Darcy  
226 Lime



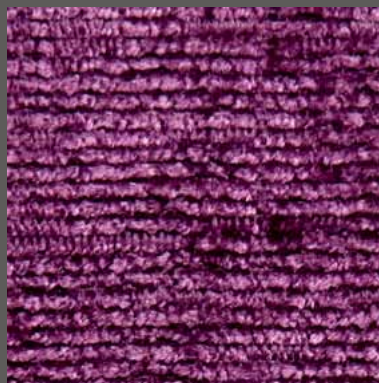
Darcy  
804 Fawn



Darcy  
664 Mauve



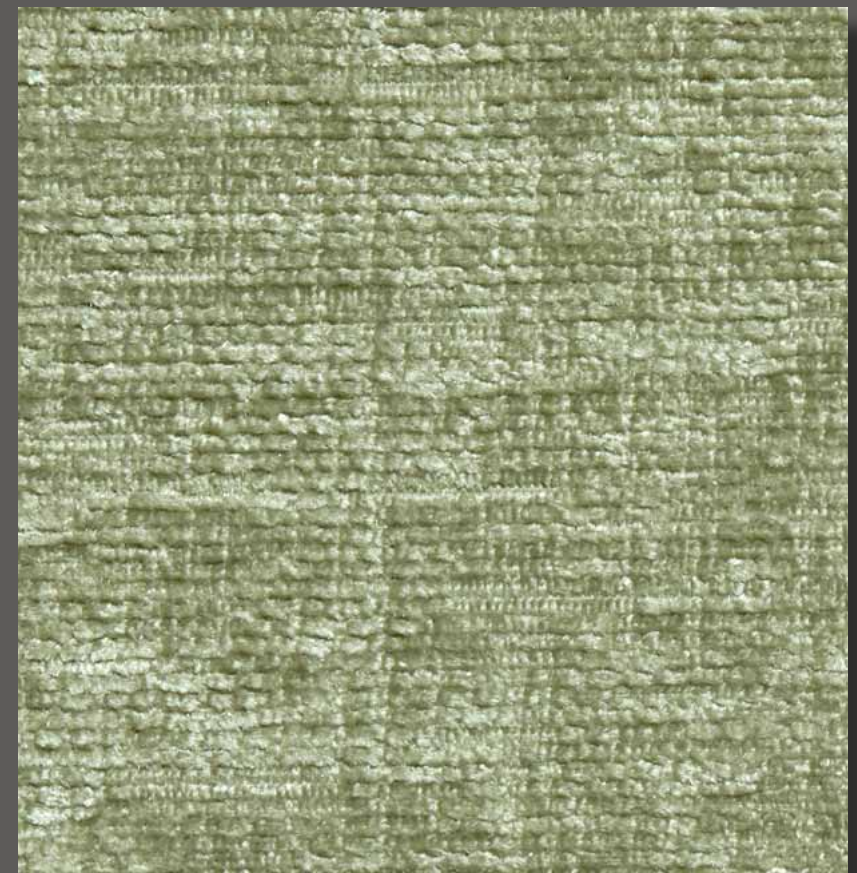
Darcy  
644 Cerise



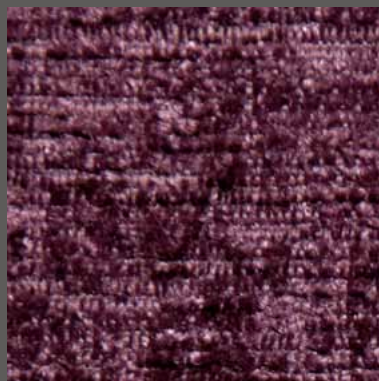
Darcy  
412 Purple



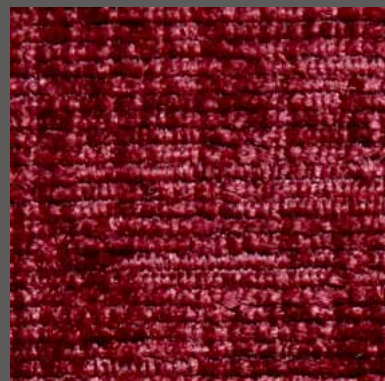
Darcy  
300 Gold



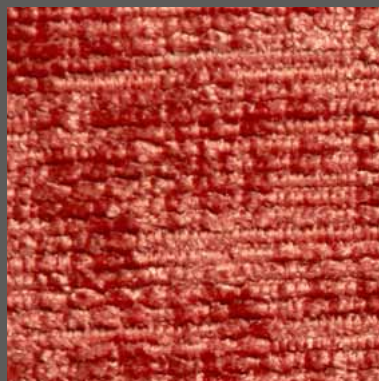
Darcy  
233 Pistachio



Darcy  
509 Plum



Darcy  
467 Bordeaux



Darcy  
411 Spice



Darcy  
911 Steel



# Darcy

## TECHNICAL INFORMATION

Composition:	100% Polyester with Microporous Film and FR Coating
Weight:	485 g/m <sup>2</sup> +/- 5%
Width:	140cm (55")
Flammability:	BS7176: Medium Hazard EN1021 Source 1 & 2, BS5852 Source 5 BS5852: 2006 Ignition source 5 EN1021-1/2 CAL TB 116 and 117, NFPA 260 (USA) Marine Standard IMO A.652 (16)
Application:	Contract and heavy domestic upholstery
Abrasion Resistance:	40,000 Martindale rubs 65,000 Wyzenbeek DR
Waterproof:	Hydrostatic head >1 metre
Colour Fastness to Light:	Grade 5
Colour Fastness to Rubbing:	Dry <4 Wet <3/4
Additional:	Anti-microbial and Anti-fungal with a stain resistant finish
Recommended Cleaning:	<ul style="list-style-type: none"> <li>Upholstered furniture should be vacuumed/cleaned regularly to remove dust/ surface grit particles and prevent build-up of soiling.</li> <li>Take care not to cause abrasive damage.</li> <li>Most stains can be removed by wiping clean.</li> <li>Microfibre cloths are extremely effective without soap, which is helpful as soap can clog your fabric.</li> <li>Remove spillages promptly (within 15 mins) with an absorbent dry cloth.</li> <li>For heavier soiling use a soft brush with care to avoid abrasive damage to surface and tepid soapy water (non-alkaline). Rinse clean with water ensuring product residues are removed as this inhibits the stain repellent. Dry with an absorbent cloth.</li> <li>Bodily fluids should be removed promptly with cold water and then cleaned as above.</li> <li>Water and oil based stains may be removed by using most water based household proprietary spray cleaning agents, following instructions carefully.</li> <li>Extreme soiling may be cleaned with a 5% Sodium Chlorite (bleach) solution.</li> <li>Do not machine wash, fully immerse or dry clean.</li> <li>Do not apply other chemicals to the fabric.</li> </ul>
Continuity:	Although every effort is made to ensure that fabrics ordered match the colours in this pattern card, slight variations may occur from batch to batch.

Please note Panaz reserve the right to update product specification at their discretion.



Certificate No: 2358



Innovation in contract fabrics

For further information please visit  
[www.pamaz.com](http://www.pamaz.com)



BS5852  
CRIB 5  
EN1021/2



BV 0062



Upholstery



Flame Retardant  
To Crib 5



Waterproof



Anti-Microbial  
Anti-Fungal



Stain Resistant

Collection  
**Darcy**  
TO IGNITION SOURCE 5

Head Office.  
Panaz Ltd, Spring Mill, Fence,  
Near Burnley,  
Lancashire, BB12 9HP  
England  
Tel: +44 (0) 1282 696969  
Fax: +44 (0) 1282 611519  
email: [admin@panaz.co.uk](mailto:admin@panaz.co.uk)

Panaz France  
7 rue Ferdinand Fabre,  
75015 Paris  
(Métro Convention - Ligne 12)  
France  
Tel: +33 (0) 1 40 25 05 07  
Fax: +33 (0) 1 40 25 09 64  
email: [patrick.martinez@noos.fr](mailto:patrick.martinez@noos.fr)

Panaz Germany  
Nortzstrasse 20  
67152 Ruppertsberg  
Germany  
Tel: +49 6326 967 528  
Fax: +49 6326 980 553  
email: [Uwe.Ney@t-online.de](mailto:Uwe.Ney@t-online.de)

Panaz (USA) Inc  
2102 Business Center Drive  
Suite 215B  
Irvine, CA 92612  
USA  
Tel: +1 949 253 4163  
Fax: +1 949 253 4167  
email: [sales@panaz.com](mailto:sales@panaz.com)