

Supplier:

Emergent Crown Contract Office Furnishings Ltd

Title:

F2+ Operating Instructions



**Create.
Innovate.
Inspire.**

Unit 5, Browmills Industrial Estate, Brighouse Road, Hipperholme, Halifax, HX3 8EF

t: 01422 349119 e: sales@emergent-crown.co.uk



F2 + Operating Instructions

1. Seat Height Adjustment

To increase the height, lighten the load on the seat and lift lever. Increase the load on the seat and lift lever to lower seat height.

2. Seat Tilt Adjustment (Independent only)

To free float or to adjust the seat angle, lift the lever and adjust seat to the required position. Release lever to lock.

3. Seat & Back Tilt Adjustment (Synchro only)

To free float or to adjust the seat & back angle, lift the lever and apply pressure to the back of the chair. Select the required position and release lever to lock.

4. Back Rake Adjustment (Independent & Back Rake only)

To free float or to adjust the back angle, lift the lever and adjust back to the required position. Release lever to lock.

5. Back Height Adjustment

Whilst sitting, lift the back to the required position. Note the back must be lifted to the highest position to go back down to the lowest position.

6. Body Weight Adjustment

Turn knob clockwise to increase tension. Turn knob anti-clockwise to decrease tension.

7. Seat Depth Adjustment (Optional)

Lift lever. Move seat to required position. Release lever to lock.

8a. Step by Step Arm Height Adjustment

Whilst sitting, lift the arm pad to the required position. Note the arm must be lifted to the highest position to go back down to the lowest position.

8b. 3D Arm Adjustment (Optional)

Height - Push button on side of arm and lift arm to required position. Release to lock.

Width - Loosen hand wheel by turning clockwise. Move arm in or out to required position. Tighten hand wheel anti-clockwise.

Depth - Slide arm pad forward or backward to required position.

9. Pump-Up Lumbar Adjustment (Optional)

Squeeze bulb until required lumbar is achieved. Press button on bulb to release.



Mechanisms



Permanent Contact Back (PCB)
Non-Tilting seat base, with an adjustable back angle. Back can have a free-floating Permanent Contact Back mechanism, or alternatively locked in any user-defined position.



Synchronised Mechanism (SYN)
Adjustable seat base angle and back angle move together synchronised. The back moves at an angle of 2.5 times the seat angle. Movement can be free-floating synchronised action or alternatively the seat and back angle can be locked in position.



Dynamic Mechanism (DYN)
Weight Tension controlled constant back support rest, side tension adjustment, antishock four position locking. Back can have a free-floating mechanism, or alternatively locked in a variety of positions.



Multi-Tilt Mechanism (MLT)
Adjustable seat base angle and independent back angle adjustment. Back can have a free floating action where seat and back angle move independently or alternatively the seat and back can be locked at an infinite number of positions. Chairs have a torsion control to adjust to the weight of the user.



Independent Seat & Back (ISB)
Adjustable seat base angle and independent back angle adjustment. Back can have a free floating action where seat and back angle move independently or alternatively the seat and back can be locked at an infinite number of positions.

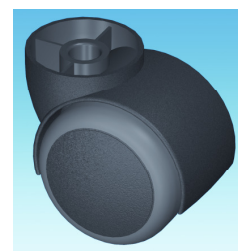
Castors



Brake Loaded Castors
The brake loaded castors ensures that the chair stays stationary whilst there is weight on it.



Brake Un-Loaded Castors
Castor brakes only operate when a person is not sitting on the chair or stool ie. when seated the castors freewheel. It also reduces the risk of the chair or stool rolling away from behind the user when he/she gets off the chair.



Soft Rimmed Castors
The soft rimmed castors mean the chair will move around but as though is it on a carpet. As the castors are not smooth & makes the chair harder to move on a vinyl floor.

**Create.
Innovate.
Inspire.**